



#1 best public college in New York and #18 in the nation. Some of the reasons include student retention, graduation rate, diversity and local community.

— *American City Business Journal*, 2015

#5 out of the 50 best-rated, most affordable colleges for international students.

— *Great Value Colleges*, 2016



#8 best value among the nation's public colleges and #15 overall.

— *Forbes's Best Value Ranking*, 2016

#9 in average annual earnings for graduates in Upstate New York colleges.

— *U.S. Department of Education*, 2016



Contact us

Graduate Director: John Frazier
frazier@binghamton.edu, (607) 777-6179

Department Secretary: Rita Carr
rcarr@binghamton.edu, (607) 777-2755

Address:

Old Johnson Hall, Room 102
4400 Vestal Parkway East
Binghamton, NY 13902

To apply online, visit

<http://gograd.binghamton.edu/apply/>

To learn more about our graduate program, visit

<http://binghamton.edu/geography/>

<http://facebook.com/BinghamtonGeography>

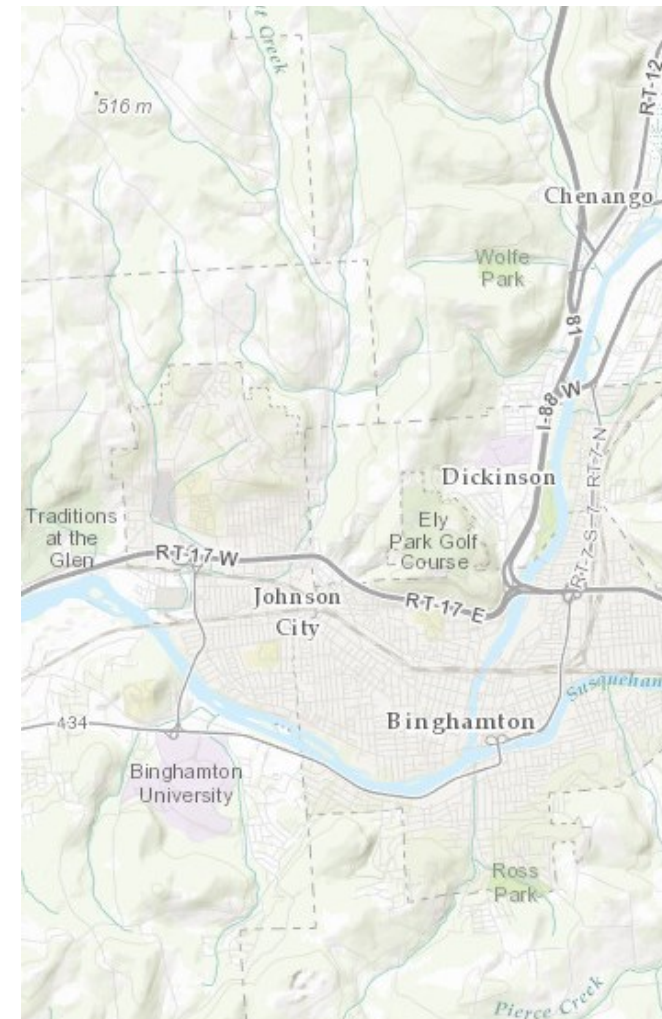
http://twitter.com/BU_Geography



BINGHAMTON UNIVERSITY | HARPUR COLLEGE OF ARTS AND SCIENCES

Department of Geography

Graduate Program



BINGHAMTON UNIVERSITY
STATE UNIVERSITY OF NEW YORK



Introduction

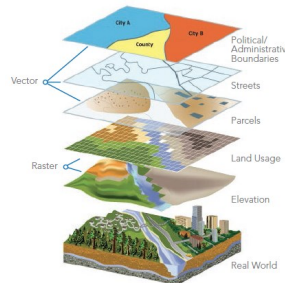
Geography was established in 1945 as part of the Department of Social Sciences at Harpur College. Professor Joseph Van Riper was the founder and also served as Chair of the Social Sciences Department of Harpur College. The graduate program and the Department of Geography were established in 1966 when Harpur College became part of the State University of New York at Binghamton. It has since remained a vibrant department with active undergraduate and graduate programs. Our graduate program provides rigorous instructional training and outstanding graduate mentoring. Our faculty members have been conducting cutting-edge research and publishing in top-ranked academic journals. Our graduate students have won many awards in national academic competitions and secured job positions as GIS specialists, urban planners, environmental consultants, resources managers, etc., for local, state, and federal government agencies.



MA Tracks

Cartography and Geographical Information Systems

- GIS
- Remote Sensing
- Cartography
- Spatial Analysis
- Internet Mapping



Environmental and Resource Management

- Environmental Studies
- Natural Hazards and Society
- Water Resources
- Environmental Assessment
- Resource Management



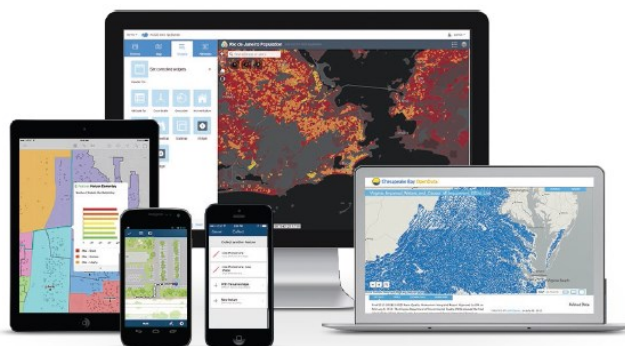
Urban Planning and Applied Geography

- Urban Patterns
- Environmental Planning
- Retail Analysis
- Land Use Analysis
- Population/Public Health



Sustainability

- Sustainable Communities
- Environmental Policy
- Economic Development
- Social Equity
- Health Care



Admission Requirements

- Minimum GPA : ≥ 3.0
- Transcripts from attended college or university
- Résumé or curriculum vitae
- Two letters of recommendation
- Official GRE scores
- Personal statement of 2 to 3 pages describing your reasons for pursuing graduate study, your career aspirations, your special interests within your field, and any unusual features of your background that might or be of interest to the graduate admissions committee
- International applicants: official TOEFL/IELTS/PTE Academic scores

Application Deadlines

- Fall: January 15 (Funding) / May 15
- Spring: October 15 (Funding) / January 15

Scholarships & Funding

- All applications for admission to our graduate programs will be considered for financial aid.
- We offer many financial aid options (TA, RA, etc.) to graduate students through various sources.

Careers in Geography

- Urban Planner/Community Development
- Cartographer/Computer Mapper
- GIS/Remote Sensing Specialist
- Environmental Consultant
- Water Resource Manager
- Surveyors and Surveying Technicians
- Business Applications